

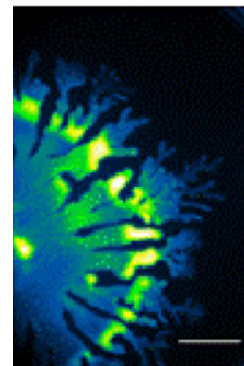
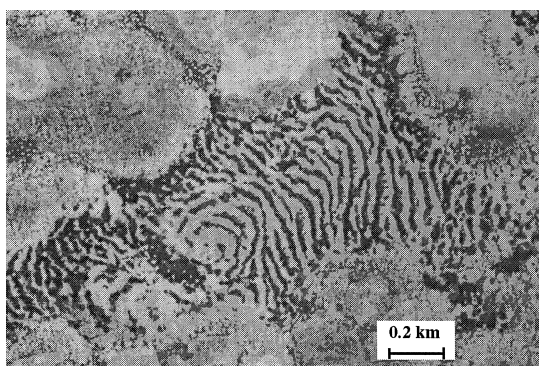
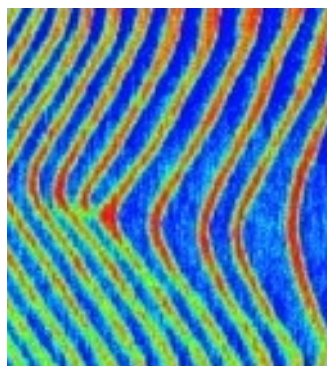
REU 2025: Patterns & PDEs

June 23 – August 15, 2025

University of California, Irvine

Description

This NSF-funded REU project will explore connections between differential equations and pattern formation, using the theory of dynamical systems and partial differential equations, in addition to numerical techniques, with applications in mathematical biology, ecology, and/or physics.



Details

Location: Department of Mathematics
University of California, Irvine
Dates: June 23 – August 15, 2025
Faculty mentor: [Paul Carter](#), UC Irvine

Support includes:

- \$5000 stipend
- Travel allowance
- Accommodation support

How to apply

Materials: CV, (unofficial) transcript, personal statement, and reference letter(s) should be submitted at MathPrograms.org
Deadline: February 3, 2025

Application requirements:

- Must be a US citizen/permanent resident
- Must not complete undergraduate degree before summer 2025
- Should have taken a course in differential equations and/or dynamical systems
- Experience with (or interest in) Matlab



UC Irvine

For questions, contact: Paul Carter, Assistant Professor of Mathematics, University of California, Irvine
pacarter@uci.edu, <http://www.math.uci.edu/~pacarter/reu.html>